

Customer :

customer

Customer part :

customer part

Comment :

Comment

S1=0.01

S2=0.07

Tmax=373

Tp S2=412.0

PI=0.17

HI=175

Sample =8096.3

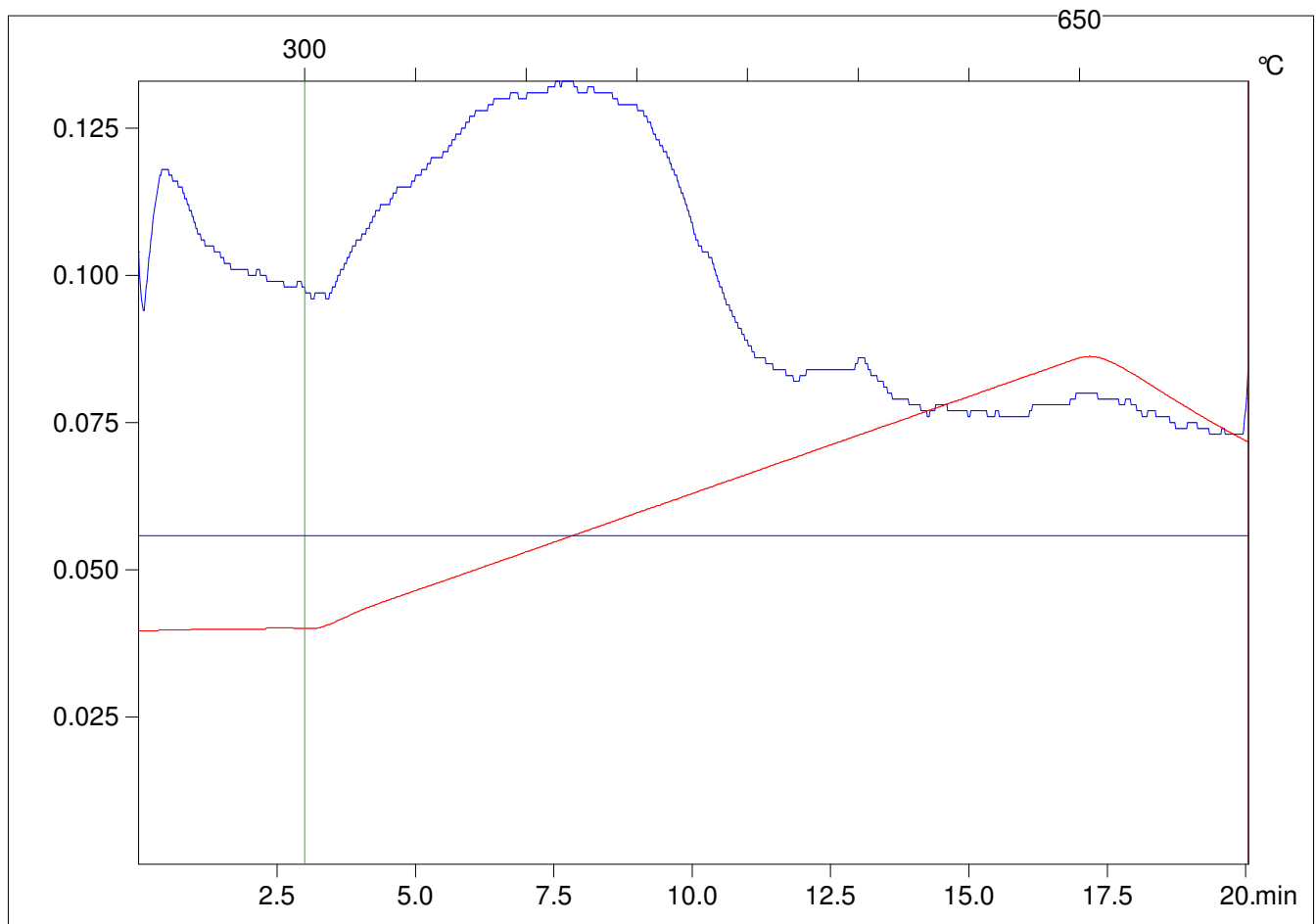
Method =Bulk Rock

Cycle=Basic

KFID(10*9)=1167

Qty =69.6

TOC=0.04



C:\VINC\PK141015\PK014.R00 : FID pyrolysis graphic

State

Pyro Status

Oxi Status